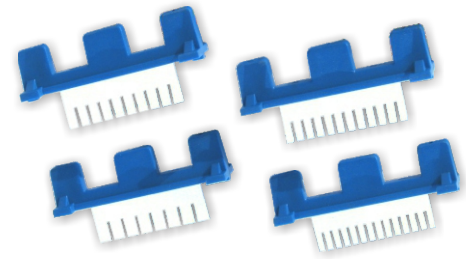


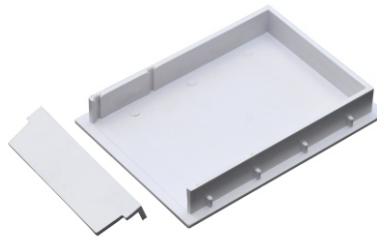
Electrophoresis Horizontal

Mini - Gel Nucleic Acid



COMB 8 WELLS
COMB 10 WELLS
COMB 12 WELLS
COMB 14 WELLS

Model: GE-1



GEL CASTER



GEL CASTING TRAY
SIZE 7x7 CM

GEL CASTING TRAY
SIZE 10x7 CM

Specifications

- It is required in biotechnology, Molecular Biology applications in colleges, Universities, Research Institutes.
- It is meant for Nucleic Acid (DNA-RNA) characterization.
- These are also called Submarine Electro-phoresis Unit/Agrose Gel/Poly Acrylamide Gel Electrophoresis (Mini size)
- The unit is jointless, moulded of transparent Polycarbonate to avoid leakage.
- It is fitted with 2 Platinum Electrodes and supplied with transparent jointless safety lid which is also made of polycarbonate.
- It is completed with Buffer chamber, safety lid with cables.

Supply As Above Complete With Following Accessories:-

▶ Comb 8, 10, 12 & 14 Wells	Set of 2 Pcs
▶ Gel Casting Tray 10x7cm	Set of 1 Pc
▶ Gel Casting Tray 7x7cm	Set of 1 Pc
▶ Gel Caster	Set of 1 Pc
▶ Red And Black Cable	Set of 1 Pc
▶ Instruction Manual	1 Each