



Angle Head 12x2ml



Model: T-50

### Specifications

- Bench Top Refrigerated Micro Centrifuge Machine
- Heavy duty C.R.C. construction finished with powder coating
- Stainless Steel centrifugal bowl for extra protection and easy cleaning.
- Fitted with well balanced universal motor with having carbon brushes.
- CRC free refrigeration.
- 2 lines, 20 characters. LCD Display for set time, run time set and run rpm, rcf.
- Digital Timer 0-59 minutes
- Programmable Speed Regulator from 2000 to 16000 rpm in variation of 100 rpm.
- Safety lid lock.
- P.I.D. Electronic digital temperature controller cum indicator is fitted to control the temperature of centrifuge bowl from room temp. upto -20°C and shuts off the cooling compressor within accuracy of  $\pm 1^\circ\text{C}$  in stand by mode. Means only the centrifuge bowl is cooling and centrifuge motor is in stand by mode.
- Temp. Accuracy when motor is also running is  $\pm 2^\circ\text{C}$

### Technical Parameter

▶ Msx Speed	16000 RPM
▶ Max RCF	16800 x g
▶ Motor	Universal Motor (with carbon brushes)
▶ Power	AC 220V 50 Hz 20A
▶ Weight	55 kg Approx
▶ Dimensions	L - 25" x W - 20" x H - 14" approx

Supply complete with following angle rotor heads to accommodate polypropylene micro Centrifuge tubes (Eppendorf Tubes as well)

Rotor Type	Rotor Capacity	Speed on Rotor (RPM)	R.C.F.
▶ Angle Rotor	12 x 1.5/2.2 ml.	16000	16800 x g

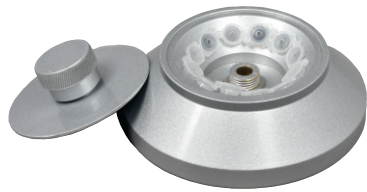
- ▶ Adapters to accept 1.5ml Eppendorf micro-centrifuge tubes.

# Refrigerated Micro Centrifuge

## Digital-20000 R.P.M.(Brushless Motor)



### PREMIUM MODEL BRUSHLESS



Angle Head 12 x 2ml



Angle Head 24 x 2ml



Model : T-55 BL

#### Specifications

- Bench Top high speed Refrigerated Micro Centrifuge Machine
- Heavy duty C.R.C. construction finished with powder coating
- Stainless Steel centrifugal bowl for extra protection and easy cleaning.
- Fitted with well balanced brushless motor with electronic drive.
- 4 lines, 20 characters. LCD Display for set time, run time, set and run rpm, rcf and rotor identification.
- Digital Timer 0-99 minutes, lid lock and fast spin option
- Dynamic brake (automatic) and imbalance detector are provided.
- Selection of 3 acceleration + 4 deceleration profile.
- Microprocessor based. Programmable Speed Regulator from 2000 to 20000 in interval of 100 rpm
- Last test parameter recall and displays automatically on LCD
- P.I.D. Electronic digital temperature controller cum indicator is fitted to control the centrifuge temp. from room temp. upto -20°C means shuts off the cooling compressor within accuracy of  $\pm 2^\circ\text{C}$ .
- Supply completed with, instruction manual, cord & plug to work on 220 volts 50Hz A.C.

#### Technical Parameter

▶ Max. Speed	20000 R.P.M.
▶ Max. RCF	23000xg
▶ Timer	0-99 Min.
▶ Motor	Brushless Motor
▶ Temp. Range	from room temperature- to -20°C
▶ Temp. Accuracy	$\pm 2^\circ\text{C}$ (at 20000 rpm upto 5 minute operation of centrifuge)
▶ Power	AC 220V 50 Hz 20A
▶ Weight	55 kg. Approx.
▶ Dimension	L-25" x W-20" x H-14" approx.

Machine comes without rotor heads.

Optional rotors can be selected as per customer's requirements are as under

Rotor Type	Rotor Capacity	Speed on Rotor (RPM)	R.C.F.
▶ Angle Rotor	12 x 1.5/2.2 ml.	20000	23000 xg
▶ Angle Rotor	24 x 1.5/2.2 ml.	16000	18000 xg

● **Note:** The speed of the machine depends upon the type of rotor being used. If rotor is heavy the speed will reduce as per above