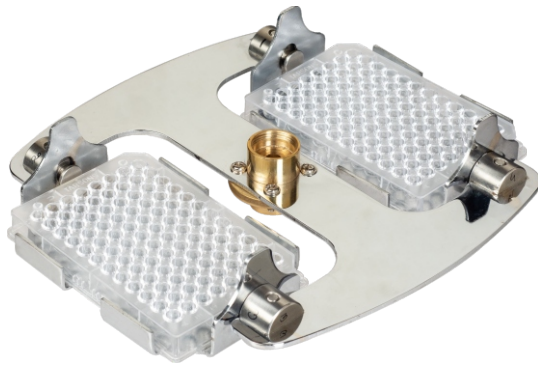


Cell Wash 96 Wells Plate Centrifuge, max speed 2850 rpm



Swing out head 2 plates of 96 wells



Model: T-6

Full body made of ABS plastic Injection Molded from our dies and molds for which Laby is sole Honour including its design.

Specifications

- Fitted with extra long life motor without carbon.
- Programmable speed regulator to control speed in range of 500, 1000, 1500, 2000, 2500, 2850 R.P.M.
- 0 to 99 minutes timer which can be set in interval of 1 minute.
- Supplied with Swingout Rotor to hold 2 plates of 96 wells each.

Physical Parameters

▶ Net weight	12.5 kg approx
▶ Gross Weight with box	14 kg
▶ Dimensions of machine	L=395mm, W=360mm, H=280mm
▶ Dimensions of outer box	510 x 510 x 390 mm